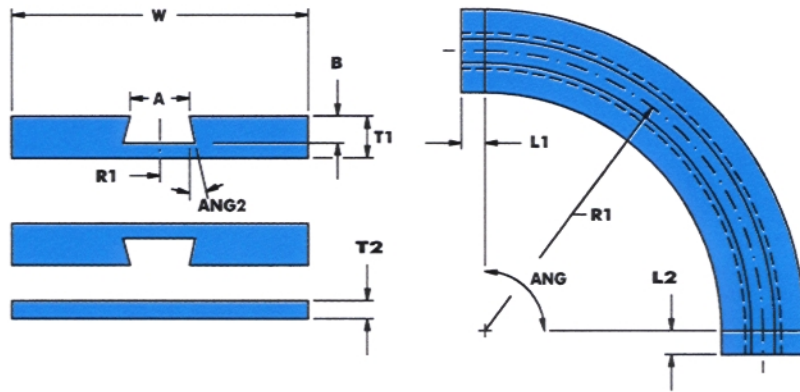


Curves



MonoBlock 882 Bevel Curves

Part #	Angle deg	A (in)	B (in)	R1 (in)	T1 (in)	T2 (in)	W (in)
MB2315	30	2.281	.875	18	1.25	.625	5.00
MB2325	30	2.281	.875	24	1.25	.625	5.00
MB2335	30	2.281	.875	36	1.25	.625	5.00
MB2318	30	2.281	.875	18	1.25	.625	8.00
MB2328	30	2.281	.875	24	1.25	.625	8.00
MB2338	30	2.281	.875	36	1.25	.625	8.00
MB23110	30	2.281	.875	18	1.25	.625	10.50
MB23210	30	2.281	.875	24	1.25	.625	10.50
MB23310	30	2.281	.875	36	1.25	.625	10.50
MB2415	45	2.281	.875	18	1.25	.625	5.00
MB2425	45	2.281	.875	24	1.25	.625	5.00
MB2435	45	2.281	.875	36	1.25	.625	5.00
MB2418	45	2.281	.875	18	1.25	.625	8.00
MB2428	45	2.281	.875	24	1.25	.625	8.00
MB2438	45	2.281	.875	36	1.25	.625	8.00
MB24110	45	2.281	.875	18	1.25	.625	10.50
MB24210	45	2.281	.875	24	1.25	.625	10.50
MB24310	45	2.281	.875	36	1.25	.625	10.50
MB2615	60	2.281	.875	18	1.25	.625	5.00
MB2625	60	2.281	.875	24	1.25	.625	5.00
MB2635	60	2.281	.875	36	1.25	.625	5.00
MB2618	60	2.281	.875	18	1.25	.625	8.00
MB2628	60	2.281	.875	24	1.25	.625	8.00
MB2638	60	2.281	.875	36	1.25	.625	8.00
MB26110	60	2.281	.875	18	1.25	.625	10.50
MB26210	60	2.281	.875	24	1.25	.625	10.50
MB26310	60	2.281	.875	36	1.25	.625	10.50
MB2915	90	2.281	.875	18	1.25	.625	5.00
MB2925	90	2.281	.875	24	1.25	.625	5.00
MB2935	90	2.281	.875	36	1.25	.625	5.00
MB2918	90	2.281	.875	18	1.25	.625	8.00
MB2928	90	2.281	.875	24	1.25	.625	8.00
MB2938	90	2.281	.875	36	1.25	.625	8.00
MB29110	90	2.281	.875	18	1.25	.625	10.50
MB29210	90	2.281	.875	24	1.25	.625	10.50
MB29310	90	2.281	.875	36	1.25	.625	10.50

Angle 2 8 degrees standard

Tangents L1 and L2 zero unless specified

Materials: Polystone M NAT
PolyStone M Gry Oil

Polystone M Blk Repro
Sustamid 6G MOS2