

KYDEX® XD MB 3D Laminate

Sheet for flat lamination and membrane pressed applications with Microban® Antimicrobial Product Protection

Introduction

KYDEX® XD MB is a thermoplastic 3D laminate giving designers the ability to incorporate compound corners, logos, and wire management holes while eliminating unsightly seams and the need for edgebanding typically associated with HPL/TFM surfaces. Its integral colour and superior impact resistance minimizes costly maintenance associated with other laminates. Microban® protection is built-in to continuously fight the growth of microbes.

General Information

Extreme durability (XD), superior impact, membrane pressable thermoplastic 3D laminate with integral color from 0.76mm-1.02mm (0.030"-0.040") thickness. While providing good definition it surpasses vinyl overlays, high pressure laminates and melamine in resistance to surface and edge impact.

Suggested Applications

- Store Fixtures
- Checkout Counters
- Exhibits and Displays
- Moldings
- Transaction Surfaces
- Workstations
- Logo and Trademark Panels
- Kiosks
- Cabinetry
- Door and Drawer Fascias
- Pedestals and Stands
- Gondolas
- Tabletops
- Flat Laminated Panels

Features

- Tough and extremely durable
- Resistant to cracking and chipping
- Solid, integral colour
- 4,000+ custom colours
- Resistant to a wide range of chemicals
- Abrasion resistant
- Microban® antimicrobial technology inhibits the growth of bacteria that can cause stains, odors and product deterioration.
- Microban® technology is built-in to the sheet so it won't wash or wear away and lasts for the lifetime of the product/sheet.
- Microban® technology keeps the surface cleaner between cleanings.
- Fire retardant
- Very low moisture absorption
- Membrane pressable
- Flexibility allows small radius bends

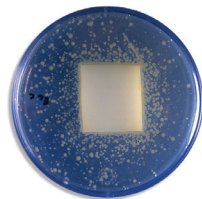


KYDEX, LLC
ISO 9001 and 14001 Certified

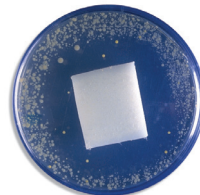
Customer Service
6685 Low St, Bloomsburg, PA 17815 USA
Phone: 800.325.3133, +1.570.389.5810
Outside the US: +1.570.389.5814
Fax: 800.452.0155, +1.570.387.7786
Email: info@kydex.com

Technical Service
Phone: 800.682.8758
Fax: +1.570.387.8722
Outside the US: +1.570.387.6997
Email: techservice@kydex.com

www.kydex.com



Without Microban® antimicrobial product protection³



With Microban® antimicrobial product protection³

This information is based upon standard laboratory tests and is provided for comparative purposes to substantiate antimicrobial activity for non-public health applications. Microban product protection inhibits the growth of microorganisms that can cause stains, odors and product degradation.



KYDEX® XD MB 3D Laminate

Sheet for flat lamination and membrane pressed applications with Microban® Antimicrobial Product Protection

Environmental and Safety Considerations

Physical Properties

KYDEX, LLC is committed to ensuring that its products can be manufactured, transported, stored, used, disposed and recycled with an appropriate regard for safety, health and environmental protection. We support the safe handling of our products. Please contact our Technical Service department at 800.682.8758 for resources or visit our website: <http://www.kydex.com>. For Material Safety Data Sheets, please call 800.325.3133.

Property	Test Method	Typical Value ¹	
Specific Gravity	ASTM D-792	1.35	
Tensile Strength	ASTM D-638	6,100 psi	42 MPa
Tensile Modulus	ASTM D-638	351,000 psi	2416 MPa
Elongation %	ASTM D-638	126	
Flexural Strength	ASTM D-790	9,600 psi	66 MPa
Modulus of Elasticity	ASTM D-790	360,000 psi	2480 MPa
Notched Izod Impact Resistance	ASTM D-256	15 ft-lbs/in	801 J/m
Rockwell Hardness (R Scale)	ASTM D-785	94	
Heat Deflection Temperature (HDT) @264psi (1.8 MPa) unannealed/annealed	ASTM D-648	151°F 168°F	66.2°C 75.6°C
Abrasion Resistance ³	ASTM D-1044	0.0095	
Ball Impact Resistance ²	NEMA LD3 - 2005	> 3000	
Dart Impact Resistance ²	NEMA LD3 - 2005	> 1000	
Cleanability	NEMA LD3 - 2005	16	
Surface Burning Characteristics: ² Flame Spread / Smoke	ASTM E-84	Pending	
¹ Values based upon 3.20mm (0.125") sheet unless otherwise specified. ² Values based upon 1.02mm (0.040") sheet. ³ Type CS10F wheel, 500gm load, weight loss (gms) per 1000 cycles. Not intended for specification purposes.			

This information is based upon standard laboratory tests and is provided for comparative purposes to substantiate antimicrobial activity for non-public health applications. Microban technology is not designed to protect users from disease causing microorganisms. Microban protection inhibits the growth of microorganisms that cause stains, odors, and product degradation. Antimicrobial action limited to product surface.

Because we cannot anticipate or control the many different conditions under which this information and our products may be used, we do not guarantee the applicability of the accuracy of this information or the suitability of our products in any given situation. Users should conduct their own tests to determine the suitability of each product for their particular purposes. Data in the physical property table represents typical values and are to serve only as a guide for engineering design. Results are obtained from specimens under ideal laboratory conditions. Right to change physical properties as a result of technical progress is reserved. THE PRODUCTS DISCUSSED ARE SOLD WITHOUT WARRANTY OF MERCHANTABILITY OR FITNESS FOR A PARTICULAR USE, EITHER EXPRESSED OR IMPLIED, EXCEPT AS PROVIDED IN OUR STANDARD TERMS AND CONDITIONS OF SALE. Buyer assumes all responsibility for loss or damage arising from the handling and use of our products, whether done in accordance with directions or not. In no event shall the supplier or the manufacturer be liable for incidental or consequential damages. Also, statements concerning the possible use of our products are not intended as recommendations to use our products in the infringement of any patent. Consult local code and regulatory agencies for specific requirements regarding code compliance, transporting, processing, recycling and disposal of our product. Product not intended for use as a heat resistant surface. Texture, product grade and other conditions may cause variations in appearance.

This information supersedes all previously published data.

KYDEX, LLC
ISO 9001 and 14001 Certified

Customer Service
6685 Low St, Bloomsburg, PA 17815 USA
Phone: 800.325.3133, +1.570.389.5810
Outside the US: +1.570.389.5814
Fax: 800.452.0155, +1.570.387.7786
Email: info@kydex.com

Technical Service
Phone: 800.682.8758
Fax: +1.570.387.8722
Outside the US: +1.570.387.6997
Email: techservice@kydex.com

www.kydex.com