



Röchling Machined Plastics - The Power of Partnership for over 30 years!

Röchling Machined Plastics has been providing high quality plastic parts to a wide variety of industries for more than 30 years. Founded in 1981 RMP has grown into a state-of-the-art machined products company committed to meet all customer specific requirements and qualifications.

Röchling Machined Plastics offers order-size flexibility from prototypes to high volume production in a variety of high quality plastic materials. Regardless of size, our customers have access to knowledgeable personnel providing quality parts and outstanding customer service.

Röchling Machined Plastics is a performance driven company that strives to put our customer's needs first. Examples of our Quality Services include:

- ⇒ Computer Numerical Controlled (CNC) Machining
- ⇒ Five Axis Controlled Turning
- ⇒ CNC Routing (table size 23" x 35" to 51" x 243")
- ⇒ Manual and Computerized Lathes
- ⇒ Precision Grinding
- ⇒ Screw Machining
- ⇒ CNC Machining Centers
- ⇒ Profile Moulding

30

years

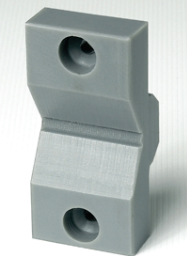
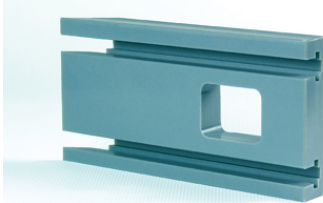
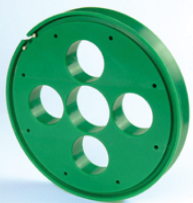
The Power of Partnership



As a member of the German based Röchling Group, we offer proven products from the Polystone®, Sustamid®, Sustarin® and Susta HPMs family of products and can provide other quality products per our customer's requirements.

Polystone® M (UHMW-PE)
Polystone® P (Polypropylene)
Polystone® G (HDPE)

Sustamid® Nylon
Sustarin® Acetal
Susta HPMs



Applications

- ⇒ Power transmission components
- ⇒ Wheels, rollers, guides & bearings
- ⇒ Liners & wear items for bulk material handling
- ⇒ Starwheels & guides for filling equipment
- ⇒ Special profiles
- ⇒ Cutting boards
- ⇒ Sheaves & pulleys

Markets Served

- ⇒ Distribution
- ⇒ Material handling and processing
- ⇒ Food processing and packaging
- ⇒ Waste water treatment
- ⇒ Paper Industry
- ⇒ Transportation
- ⇒ Electronics
- ⇒ Recreation

Röchling Machined Plastics

Westmoreland Technology Park 1
161 Westec Drive
Mount Pleasant, PA 15666, USA
Phone: 724-696-5200
Fax: 724-696-5300
rmp@roechling.biz
www.roechling.biz