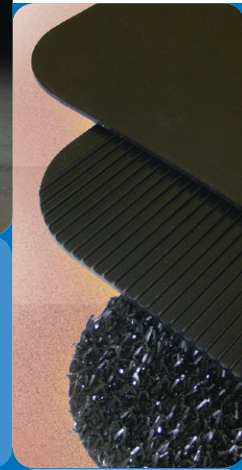




RÖCHLING

SAFE PASS® Mud Flaps Plastic Products for the Transportation Industry



9/2014



SAFE PASS®
Spray Guard®

Manufacturing

- Best lead time in the industry
- Prime grade polymer resins
- ISO 9001: 2008
- Masters of Quality Award from O.E.M.
- Special die cutting and router capabilities for custom-sized flaps.

Anti-Curl

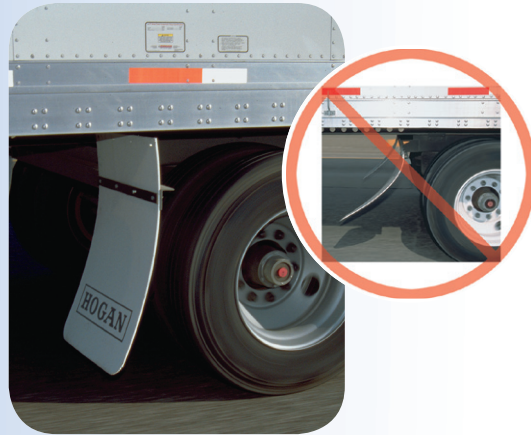
Our flaps don't curl like less expensive plastic flaps. We have set the standard for poly flaps today. As a matter of fact, our flaps have a "memory"... bend them and they return to vertical.



Anti-Sail

What good is a mud flap if it doesn't even stay behind the tire? All of our poly flaps are anti-sail. Tests have proven that our flaps "sail" less than competitor's flaps.

Vehicles photographed at 55 mph.



Anti-Spray

Splash and spray is a major public concern with over-the road vehicles. Spray affects all drivers' visibility and is a particular aggravation for the trucking industry. Spray Guard® is the only anti-spray flap that significantly reduces splash and spray. That's why the nation's largest fleet uses Spray Guard®.



Röchling Engineering Plastics guarantees its products against defective materials and workmanship for a period of ONE YEAR. Claims under this guarantee are limited to the value of the products sold and will be considered if the defective product has been properly installed and subjected to normal use.



SAFE PASS® 175

Made from U.V stabilized polyethylene resin to produce a softer, more flexible and durable flap. SAFE PASS® 175 is available in white, black and nine other brilliant colors—a real value!

Round corners are standard and custom imprinting is available.

Designed

- To prevent curling
- Not to break at temperatures of -20°F to 170°F
- Not to sail
- To be priced competitively

UNDECORATED			
Size	PART NUMBERS		Wt.
	White	Black	
24 x 24	10938	10934	3.5
24 x 30	10959	10955	4.3
24 x 36	10975	10971	5.2

DECORATED			
Size	PART NUMBERS		Wt.
	White	Black	
24 x 24	10936	10932	3.5
24 x 30	10957	10953	4.3
24 x 36	10973	10969	5.2

Actual Thickness: 0.170" Also available in a 0.25" version.

UNDECORATED			
Size	PART NUMBERS		Wt.
	White	Black	
24 x 24	11473	11471	4.0
24 x 30	11483	11481	5.0
24 x 36	11493	11491	6.0

DECORATED			
Size	PART NUMBERS		Wt.
	White	Black	
24 x 24	11472	11470	4.0
24 x 30	11482	11480	5.0
24 x 36	11492	11490	6.0

Actual Thickness: 0.340" Also available in a 0.25" version.



Spray Guard®

This is the best constructed and most effective anti-spray flap in the transportation industry. The artificial grass surface captures road spray and channels the water downward.

Round corners are standard and custom imprinting is available.

Designed

- To reduce splash and spray by as much as 83%
- To improve visibility for the truck's driver and trailing vehicles
- To keep equipment cleaner
- Not to break at temperatures of -20°F to 170°F

UNDECORATED			
Size	PART NUMBERS		Wt.
	White	Black	
24 x 24	11154	11152	5.0
24 x 30	11166	11162	6.5
24 x 36	11176	11174	8.0

DECORATED			
Size	PART NUMBERS		Wt.
	White	Black	
24 x 24	11153	11151	5.0
24 x 30	11165	11161	6.5
24 x 36	11175	11173	8.0

Thickness: 0.906"



SAFE PASS® 375

Although made from the same polymer resins as our SAFE PASS® 175, our SAFE PASS® 375 flap is thicker and heavier. Increased spray reduction is achieved with our unique ribbed backing.

Round corners are standard and custom imprinting is available.

Designed

- To reduce water spray
- To prevent curling
- To withstand high impact at low temperatures
- Not to break at temperatures of -20°F to 170°F

SAFE PASS® Aero revolutionizes the Trucking Industry!

Röchling introduces SAFE PASS® Aero: Over 30 years of proven spray suppression technology combined with our new aerodynamic design creates a revolutionary new mud flap product for the trucking industry.

SAFE PASS® Aero and Spray Guard® mud flaps side by side comparison:

SAFE PASS® Aero allows air to pass through, reducing drag while maintaining the spray suppression qualities that are synonymous with all Spray Guard® mud flaps.

The difference is clearly visible. Smoke and air pass through the SAFE PASS® Aero mud flap.



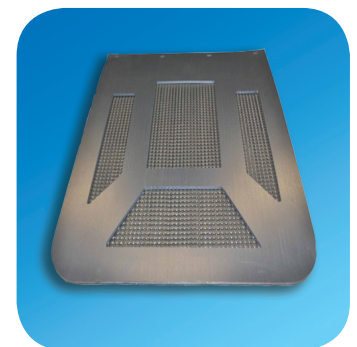
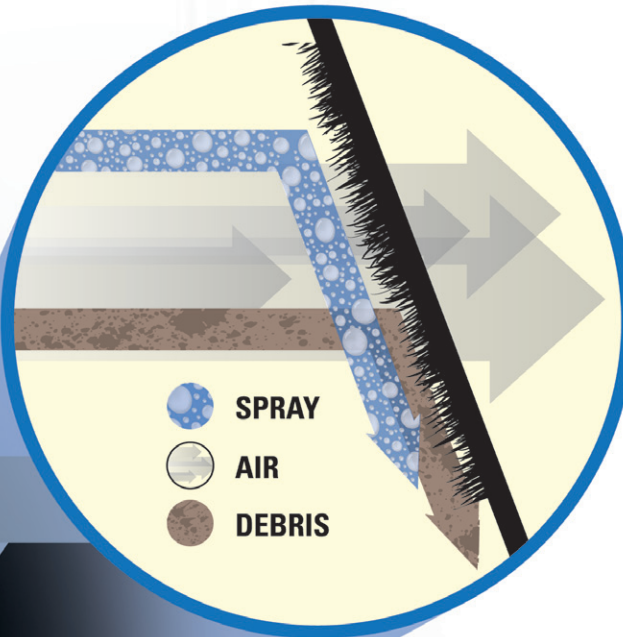
SAFE PASS® Aero



Spray Guard®

Benefits of SAFE PASS® Aero are:

- Aerodynamic Design
- Reduced Drag
- Improved performance
- Spray Suppression
- Improved visibility
- Safer operation when wet
- Cleaner equipment
- Durability
- Enhanced bracket support
- Anti-Sail
- Anti-Curl



SIZE	COLOR	PART #
24 x 24	Black	107664
24 x 30	Black	107665
24 x 30 (left)	Black	107662
24 x 30 (right)	Black	107663
24 x 36	Black	107666

SAFE PASS® – SS Improved Aerodynamics for Super Single Tires



Benefits & Features of SAFE PASS®SS:

Röchling introduces a new narrow mud flap for super single tire configurations:

- Reduces unwanted drag
- Flap matches tire width
- Reduces labor by eliminating the need to trim traditional 24" flaps

Available in various styles:

- SprayGuard® grass backed
- SAFE PASS® grooved low spray
- SAFE PASS® smooth anti-curl
- SAFE PASS® rubber

All styles can be imprinted/ personalized with your custom logo.



Now available in SAFE® PASS Aero!

Customizing

We simply take your camera-ready artwork, scan it into our computer and generate a sharp, colorful layout like these shown here. Artwork setup costs are minimal and our state-of-the-art imprinting will not fade or chip.

- Custom logos
- Custom flap colors
- Custom ink colors
- Imprinting
- Computer generated graphics

Some printing capabilities allow for color halftoning.



Flap Colors

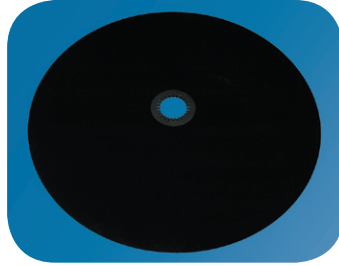


Ink Colors

	White 9100-01
	Black 9700-70
	Lemon Yellow 91-S-112
	Medium Yellow 91-S-116
	Orange 91-S-120
	Bright Red 91-S-126
	Dark Red 91-S-128
	Emerald Green 91-S-142
	Medium Green 91-S-144
	Dark Blue 91-S-150
	Light Blue 91-S-158
	Green Shade Blue 91-S-159
	Opaque Cerise 91-S-180
	Fuchsia 91-S-182
	Gold 9720 RPG
	Silver 8180 C

5th Wheel Lube Disk

This silicone impregnated poly disk replaces the grease commonly used between the truck's 5th wheel and the trailer's king pin plate. Includes steel retaining ring to fit standard 2.875" king pins only!



Intended for use on trailers with a standard 2.875" dia. king pin, which is not worn/undersized. Always verify a successful lock between the 5th wheel and king pin prior to any trip.

PART #	DESCRIPTION	WEIGHT
13175	32" diameter disk with ring	5 lbs
13176	replacement ring only	24 ozs



Sym-Mat®

Sym-Mat® is a door mat designed for the step rail of conventional tractors. Each mat is pre-drilled and comes with heavy duty Ty-Raps for easy installation. Sym-Mat® was designed "by a trucker for truckers."

PART #	SIZE	GRASS COLOR
11364	24" x 4.5" x 1"	black



Matrox® Lining Systems & Ramex® Dump Liners

Matrox® Lining Systems and Ramex® Dumpliners from Röchling Engineering Plastics provide affordable non-stick surfaces that stand up to the most extreme lining conditions. These products deliver a self-lubricating, impact resistant polymer with mechanical properties that make them ideal for most lining applications.

Matrox® & Ramex® Ultra High Molecular Weight (UHMW) Polyethylene Dump Liners

Matrox® is our premier liner for all applications, *including asphalt*. Matrox® has the impact strength, slickness, and abrasion resistance required for all aggregate loads, but is also designed to withstand loads as hot as 350 degrees F.

Ramex® Premium is our premium grade aggregate liner. Ramex® Premium offers high impact resistance as well as great release properties. This makes Ramex® Premium ideal when loading stone or coal – and because of the added toughness – a must when loading shot rock, boulders and demolition loads.

Ramex® Reprocessed offers equal abrasion resistance and slickness as Ramex® Premium, but lesser

impact strength at a more economical price. This makes Ramex® Reprocessed ideal when loading lime, sand, gravel and other lower-impact materials.

Symplate™ is the liner of choice when liner applications do not require significant impact strength. Designed for softer loads like dirt, mulch and compost that are abrasive and sticky, Symplate™ provides an affordable solution to material flow and potential abrasion issues.

(Please note that only Matrox® is designed for hauling asphalt. A single load of hot asphalt in a Ramex® Premium, Ramex® Processed or Symplate™ liner will destroy the liner and void the manufacturer's warranty.)



RÖCHLING

North American Headquarters

Röchling Engineering Plastics
903 Gastonia Technology Parkway
Dallas, NC 28034/USA

Tel.: +1 704 884-3591
Tel.: +1 800 346-1739
Fax: +1 704 922-7651

info@roechling-plastics.us
www.roechling-plastics.us

Canada

Röchling Engineering Plastics
21 Tideman Drive
Orangeville, Ontario L9W 3K3/Canada

Tel.: +1 519 941-5300
Tel.: +1 800 661-2387
Fax: +1 519 941-4489

info@roechling-plastics.ca
www.roechling-plastics.ca

