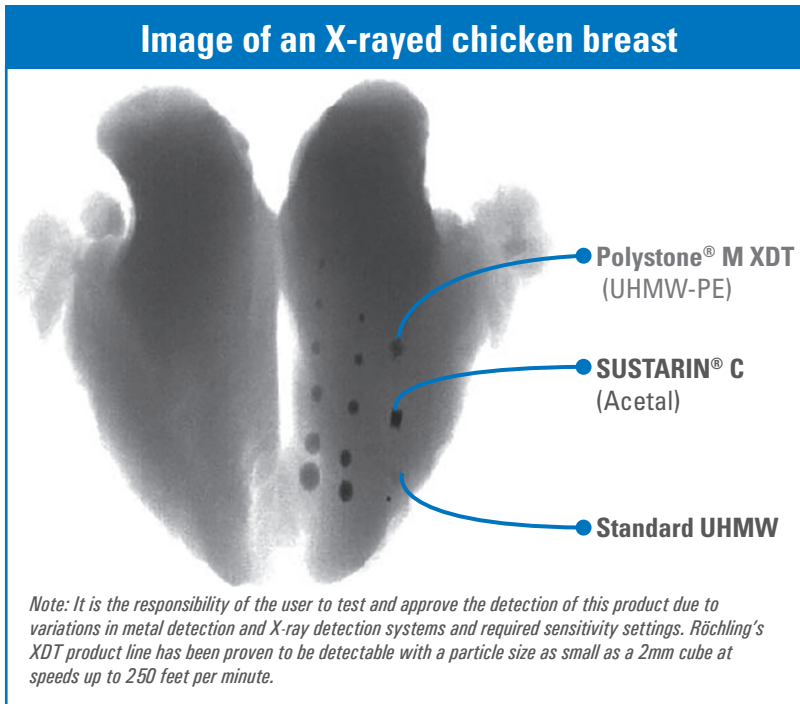


Metal & X-ray Detectable Plastics Innovations for the food processing industry!

Röchling Engineering Plastics is proud to offer detectable plastics in Polystone® P (UHMW-PE), Sustarin® C (Acetal), and SUSTAPEEK machinable stock shapes. These materials are specifically manufactured to be visible to X-ray and metal inspection technology. Food processing, medical, and packaging companies can now comply with FDA and industry specific regulations.



X-ray detectable machined parts

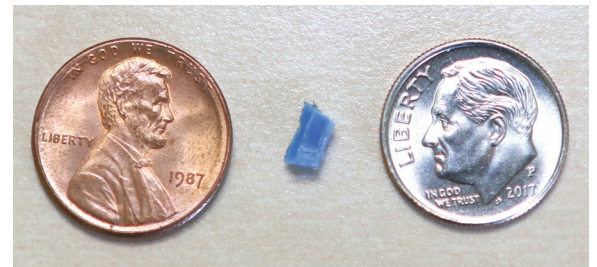


Metal detectable machined parts

	Polystone® M XDT (UHMW-PE)	SUSTARIN® C (Acetal)	SUSTAPEEK® XDT (PEEK)
Metal Detectable	✓	✓	-
X-ray Detectable	✓	✓	✓

MDT & XDT Applications

- Scraper blades
- Mixer components
- Rollers
- Wear-strips
- Bushings
- Bearings
- Guides
- Sprockets
- Agitators
- Gears
- Pharmaceutical packaging
- Pillow blocks



The materials can be detected in sizes as small as 2 mm³, allowing for focus on prevention of contamination.



www.roechling.com/us

RÖCHLING ENGINEERING PLASTICS
903 Gastonia Technology Parkway | Dallas, NC 28034 USA
P: 704.922.7814 | E: info@roechling-plastics.us

For more information, contact your local
Röchling Engineering Plastics sales professional today.

Metal & X-ray Detection Equivalence Charts

Polystone® M MDT (UHMW-PE) & SUSTARIN® C MDT (Acetal)

Stainless Steel (Sphere mm)	Polystone® M MDT (Cubed mm)	Stainless Steel (Sphere mm)	SUSTARIN® C MDT (Cubed mm)
0.80	2.33	1.00	2.45
1.00	2.66	1.10	2.80
1.10	3.00	1.20	3.15
1.20	3.33	1.50	3.50
1.50	4.00	1.58	4.20
1.60	4.33	1.90	4.55
1.80	5.00	2.20	5.25
2.00	5.33	2.40	5.60

Polystone® M XDT (UHMW-PE) & SUSTARIN® C XDT (Acetal)

Stainless Steel (Sphere mm)	Polystone® M XDT (Cubed mm)	Stainless Steel (Sphere mm)	SUSTARIN® C XDT (Cubed mm)
0.60	2.40	0.60	0.83
0.70	2.80	0.70	0.96
0.80	3.20	0.80	1.10
0.90	3.60	0.90	1.24
1.00	4.00	1.00	1.38
1.10	4.40	1.10	1.51
1.20	4.80	1.20	1.65
1.50	6.00	1.50	2.06

Note: This test was designed and conducted by Mettler Toledo to provide an estimate for the size of SUSTARIN® C MDT or Polystone® M MDT that could be detected in any food source using Safeline Metal or X-ray Detectors.

When the Stainless Steel standard detection size is known, it is reasonable to expect the corresponding equivalent conductive material of SUSTARIN® C MDT or Polystone® M MDT can also be detected in the same product environment.



Röchling Detectable materials are suggested for use in production of the following products:

- Frozen and prepared foods
- Baby food
- Soup and chili
- Snack foods
- Chips and tortillas
- Cereals
- Cheese
- Candies and chocolates
- Pastries
- Pet food



www.roechling.com/us